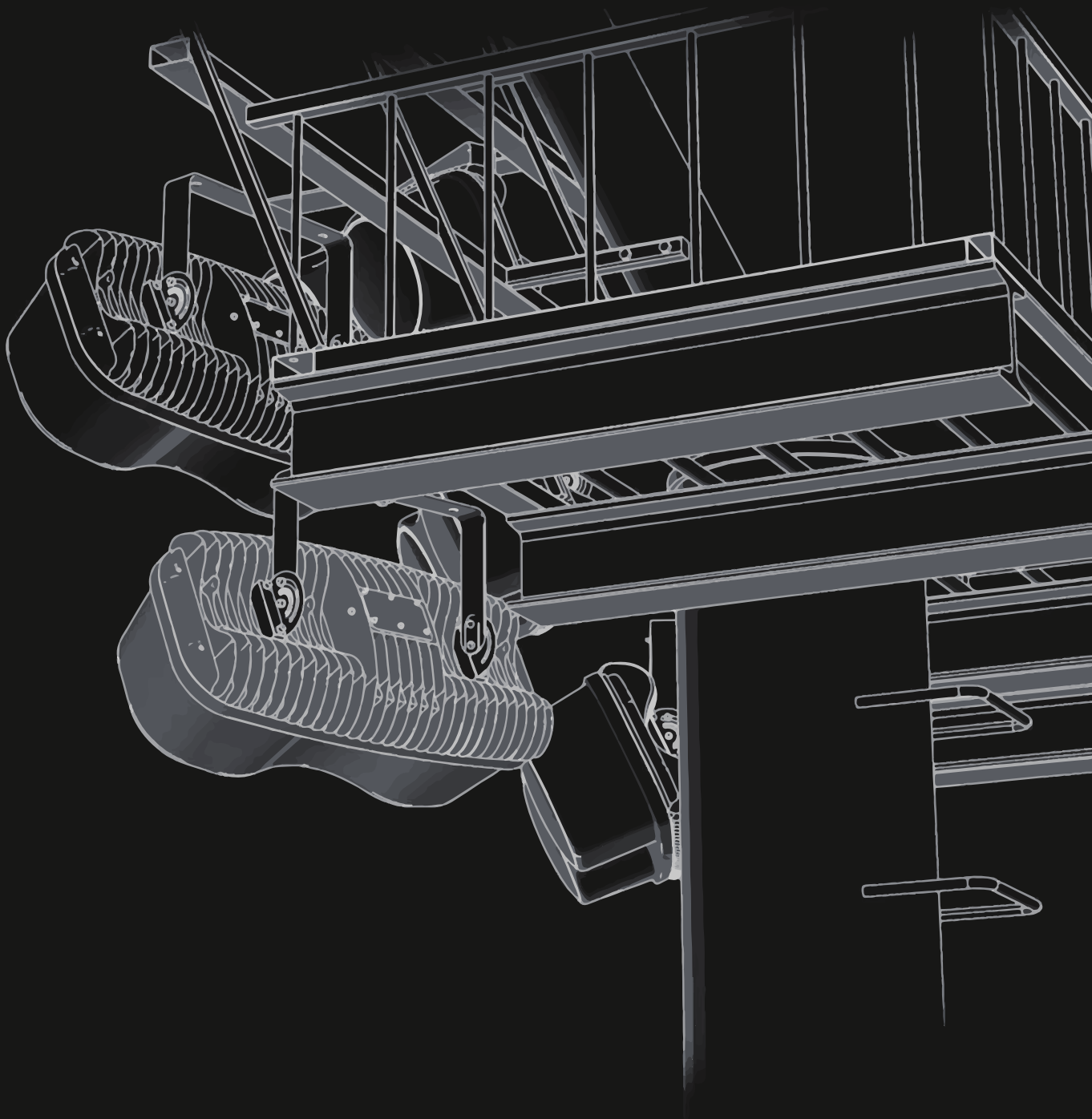


LUMEDG 

Professional LED lighting solution





Lumedgo

Professional LED lighting solution

Who we are

Lumedgo Power Technology Co., Ltd. was established in 1998, before 2006 we were one of the most advanced provider of power supply and we worked with many important companies in Asia, including China Guodian, China Mobile, and Comba Telecom etc.

In 2006 we moved to LED lighting industry, adopting the technology and experience developed from our electronic and thermal control towards the R&D, manufacture, sales and service of LED lighting. We quickly became one of the leading and most professional LED lighting companies in China.

The Lumedgo philosophy

Technology and quality are always playing key roles in the Lumedgo philosophy, we are proud to hold the "Lumedgo LED Lighting Engineering Laboratory" which is authorized and supported by China National Development and Reform Commission. Alongside this, we hold the "Lumedgo LED Lighting Technology and Research Center" which is authorized and supported by China National Science and Technology Ministry.

Till 2014 we have 384 patents and more than 300 patents are pending, the patents include the LED chips packaging, power supply controlling and design of lamp housing. We worked with ISO-9001 quality control system since 2001, the products are UL, TUV, CE, SAA, C-tick and RoHS certificated.



To be professional is the key to success

We have more than 10 professors and doctors in our company R&D department, and more than 30% of our employees have bachelor's degree or higher. All of our staff receive the highest standard of training.

As experienced LED lighting specialists, we offer our customers more than just the delivery of reliable and top performance LED lighting products. Our focus and the services we provide have enabled us to build an excellent relationship with our market. Our team of lighting designers play an important role in this. The service consists of two different levels. The first level is our basic service that we offer in providing lighting technical advice for our customers. And based on the profile (lighting scheme) supplied, our specialists will present you a customized lighting plan by using the lighting calculation software.

Lighting the way

Whether it is an infrastructural project, port, motorway, tunnel, urban roads, residential area, underpass, parking area, city center or even a greenhouse, all of your requirements will be taken into account and translated in a perfect lighting performance solution, including Lumedgo LED models, column distance and positioning and lighting class and most efficient energy consumption.

We supply lighting products and service to many important projects around the world, Lumedgo LED solutions have been used on airports, sea ports, heavy industries, big commercial buildings, warehouses and logistic centers, streets, bridges, sport fields and arenas and many other not only industrial and commercial applications but also demanding and harsh environment.

Lumedgo will continue to expand our technology development and marketing reach, delivers more productivity and benefits to our customers as we continue to grow and makes our brands more distinct for our customers.



Compact Optimum LED projection light



- 20° beam angle for long distance lighting
- Flexible and reliable, a LED light for all professional projects

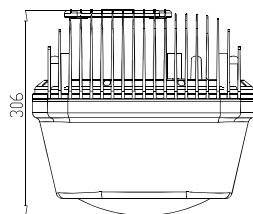
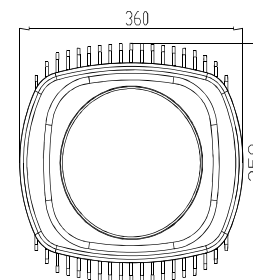


Typical application:

Street | Bridge | Architecture | Warehouse | Stadium | Tunnel | Garden | Parking | Billboard | Plaza | Show Room | Factory | Shopping Mall | Petrol Station | Conference Centers | Cold Storage | Floodlighting

Features & Characteristic:

- *20° beam angle for long distance lighting application
- *Patent multi- function design, suitable for all projects
- *5-5-10 year warranty
- *Top performance LED chips, 110 lm/w system efficacy
- *80% lumen maintenance over 50,000hours
- *0-10Vdc dimming driver available
- *Photocell and motion sensor system available
- *Built-in surge protection
- *Built-in thermal protection
- *Maintenance free
- *Mercury free, No UV or IR
- *Universal 80-347Vac input without additional adapter
- *Instant start and flicker free
- *High uniformity and color rendering



Flexible mounting system



flood lighting



street lighting



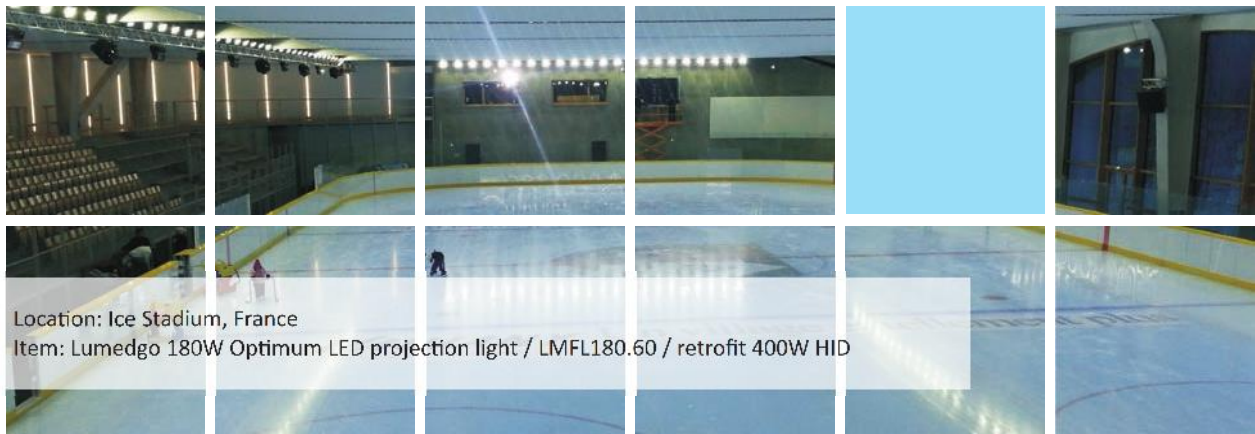
pendent lighting

Lighting distribution



Data sheet

Model	LMFL30.20	LMFL60.20	LMFL90.20	LMFL120.20	LMFL150.20	LMFL180.20	LMFL210.20	LMFL270.20
Power Consumption	LEDs	25W	50W	81W	108W	135W	162W	243W
	Driver	5W	10W	9W	12W	15W	18W	27W
	Total	30W	60W	90W	120W	150W	180W	270W
Initial Lumen Flux (6000K)	3300 lm	6600 lm	9900 lm	13200 lm	16500 lm	19800 lm	24100 lm	29700 lm
Replace HID Lamp	50-100W	100-150W	150-250W	250-300W	300-400W	400-500W	500-600W	600-1000W
Dimension	360x358x306mm							
Net Weight	10kg (22lbs)							
Color Temperature	2000K - 6000K							
Color Rendering	≥Ra80							
Working Life	≥50000Hrs							
Housing Material	Aluminum							
Coating	Zinc Rich Paint							
IP Class	IP 65 (Upgradeable to IP 67)							
Insulation Class	Class I (Upgradeable to Class II)							
Working Temperature	-40C ~ 60C / -40F ~ 140F							
Working Humidity	10% ~ 95%							
AC Input	80 ~ 315Vac, (347Vac available on request)							
DC Input	80 ~ 400Vdc, (12Vdc, 24Vdc and other input available on request)							
THD	<10%							
Power Factor	≥0.98							
Warranty	LED Module	5 year						
	Driver	5 year						
	Housing	10 year						



LED high bay light



- Perfect industrial lighting solution

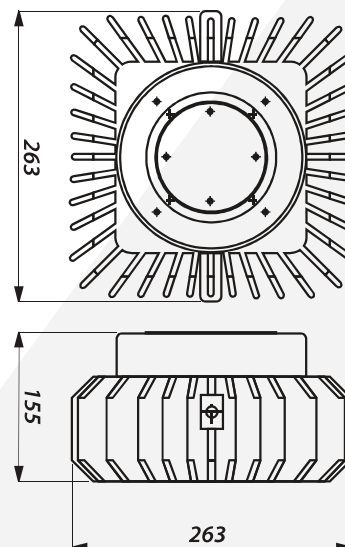


Typical application:

Factory | Warehouse | Shopping Mall | Gymnasium | Show Room | Architecture | Plant Area | Petrol Station | Floodlighting | Conference Centers | Cold Storage

Features & Characteristic:

- *Patent design, ideal for industrial and commercial applications
- *5-5-10 year warranty
- *Top performance LED chips, 110 lm/w system efficacy
- *80% lumen maintenance over 50,000hours
- *0-10Vdc dimming driver available
- *Photocell and motion sensor system available
- *Built-in surge protection
- *Built-in thermal protection
- *Maintenance free
- *Mercury free, No UV or IR
- *Universal 80-347Vac input without additional adapter
- *Instant start and flicker free
- *High uniformity and color rendering





Flexible mounting system



pendent lighting

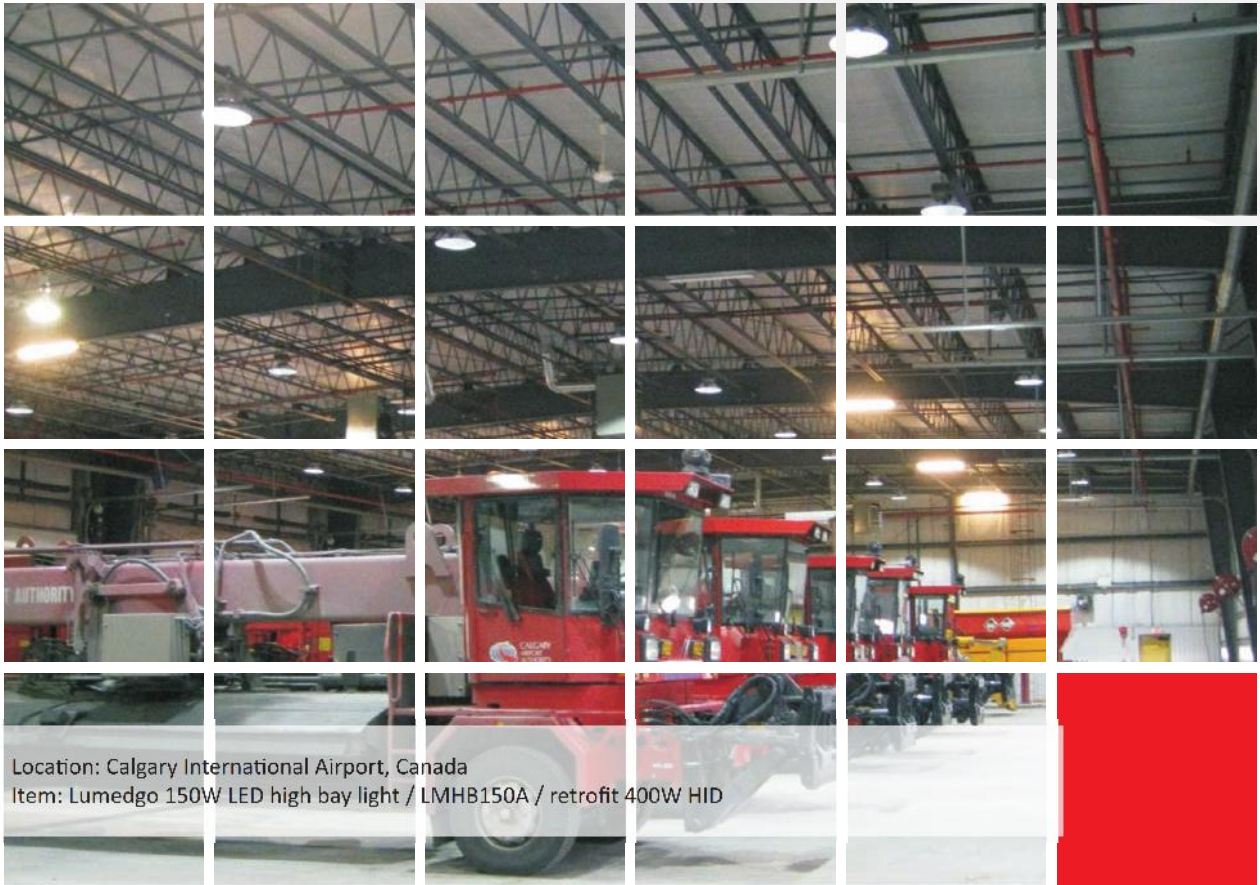
flood lighting

Lighting distribution



Data sheet

Model		LMHB60.A	LMHB90.A	LMHB120.A	LMHB150.A	LMHB180.A
Power Consumption	LEDs	50W	81W	108W	135W	162W
	Driver	10W	9W	12W	15W	18W
	Total	60W	90W	120W	150W	180W
Initial Lumen Flux (6000K)		6600 lm	9900 lm	13200 lm	16500 lm	19800 lm
Replace HID Lamp		100-150W	150-250W	250-300W	300-400W	400-600W
Dimension	Lamp Body: 263x263x155mm / Lamp Shade: Ø400mm					
Net Weight	8kg (17.6lbs)					
Color Temperature	2000K - 6000K					
Color Rendering	≥Ra80					
Working Life	≥50000Hrs					
Housing Material	Aluminum					
Insulation Class	Class I (Upgradeable to Class II)					
Working Temperature	-40C ~ 60C / -40F ~ 140F					
Working Humidity	10% ~ 95%					
AC Input	80 ~ 315Vac, (347Vac available on request)					
DC Input	80 ~ 400Vdc, (12Vdc, 24Vdc and other input available on request)					
THD	<10%					
Power Factor	≥0.98					
Warranty	LED Module	5 year				
	Driver	5 year				
	Housing	10 year				



Location: Calgary International Airport, Canada
 Item: Lumedgo 150W LED high bay light / LMHB150A / retrofit 400W HID



Location: Warehouse, Germany
 Item: Lumedgo 150W LED high bay light / LMHB-150A / retrofit 400W HID



Location: ILPEA Industries, Italy
 Item: Lumedgo 150W LED high bay light / LMHB-150A / retrofit 400W HID



Optimum LED spot light



- Simple and powerful, 60° and 100° beam available

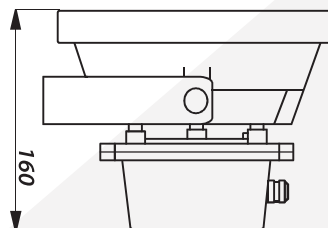
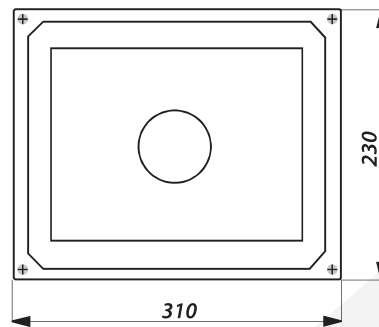


Typical application:

Floodlighting | Architecture | Plaza | Stadium & Sports Field | Tunnel | Park | Yard | Plant Area | Garden | Parking Area | Billboard | Warehouse | Show Room | Cold Storage

Features & Characteristic:

- *Compact size
- *5 year warranty
- *Top performance LED chips, 110 lm/w system efficacy
- *80% lumen maintenance over 50,000hours
- *Motion sensor system available
- *Built-in surge protection
- *Built-in thermal protection
- *Maintenance free
- *Mercury free, No UV or IR
- *Universal 80-347Vac input without additional adapter
- *Instant start and flicker free
- *High uniformity and color rendering



Data sheet

Model	LMSL30A	LMSL50A	LMSL70A	
Power Consumption	LEDs	25W	45W	63W
	Driver	5W	5W	7W
	Total	30W	50W	70W
Initial Lumen Flux (6000K)	3300 lm	5500 lm	7700 LM	
Replace HID Lamp	50-100W	100-150W	150-200W	
Dimension	308x230x162mm			
Net Weight	4kg (8.8lbs)			
Color Temperature	2000K - 6000K			
Color Rendering	≥Ra80			
Working Life	≥50000Hrs			
Housing Material	Aluminum			
IP Class	IP 65 (Upgradeable to IP 67)			
Insulation Class	Class I (Upgradeable to Class II)			
Working Temperature	-40C ~ 60C / -40F ~ 140F			
Working Humidity	10% ~ 95%			
AC Input	80 ~ 315Vac, (347Vac available on request)			
DC Input	80 ~ 400Vdc, (12Vdc, 24Vdc and other input available on request)			
THD	<10%			
Power Factor	≥0.98			
Warranty	LED Module	5 year		
	Driver	5 year		
	Housing	10 year		





LED T8 tube light



- Rotatable end caps



Typical application:

Residence | Office | Hotel | Classroom | Metro Station | Hospital | Factory | Warehouse | Show Room

Features & Characteristic:

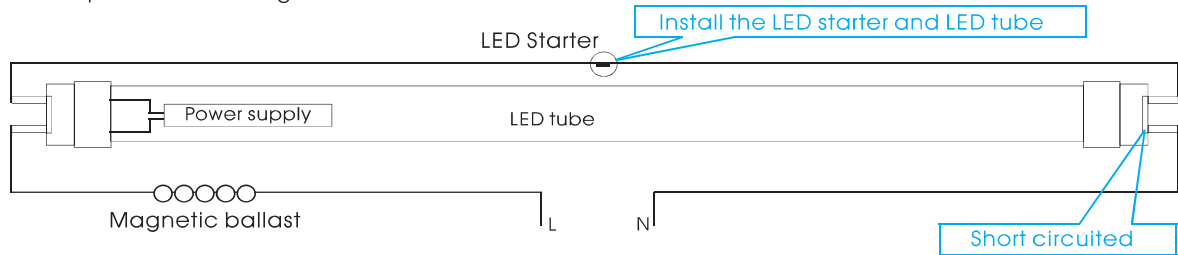
- *Rotatable end caps
- *Top performance LED chips, 100 lm/w system efficacy
- *80% lumen maintenance over 50,000hours
- *Motion sensor system available
- *Built-in surge protection
- *Maintenance free
- *Mercury free, No UV or IR
- *Universal 100-240Vac input without additional adapter
- *Instant start and flicker free
- *High uniformity and color rendering

Instruction

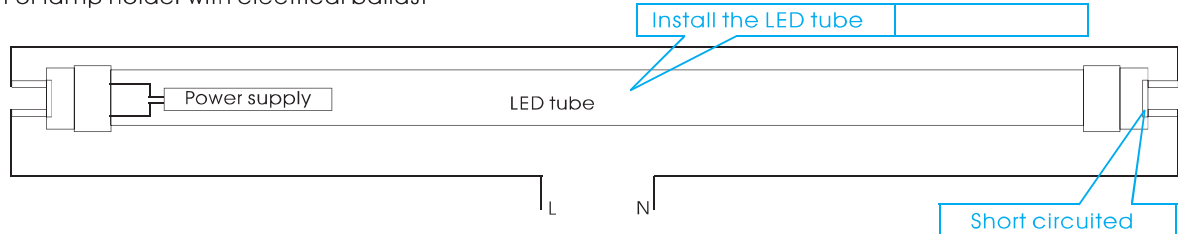
One side power only, other side is SAFE.
LED starter is included in package without extra cost.



For lamp holder with magnetic ballast & starter:

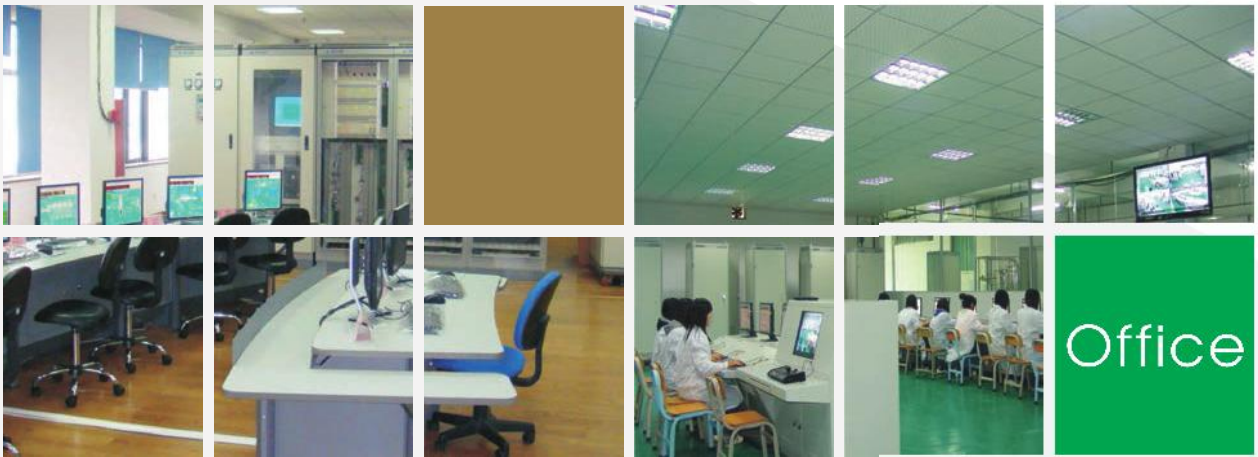
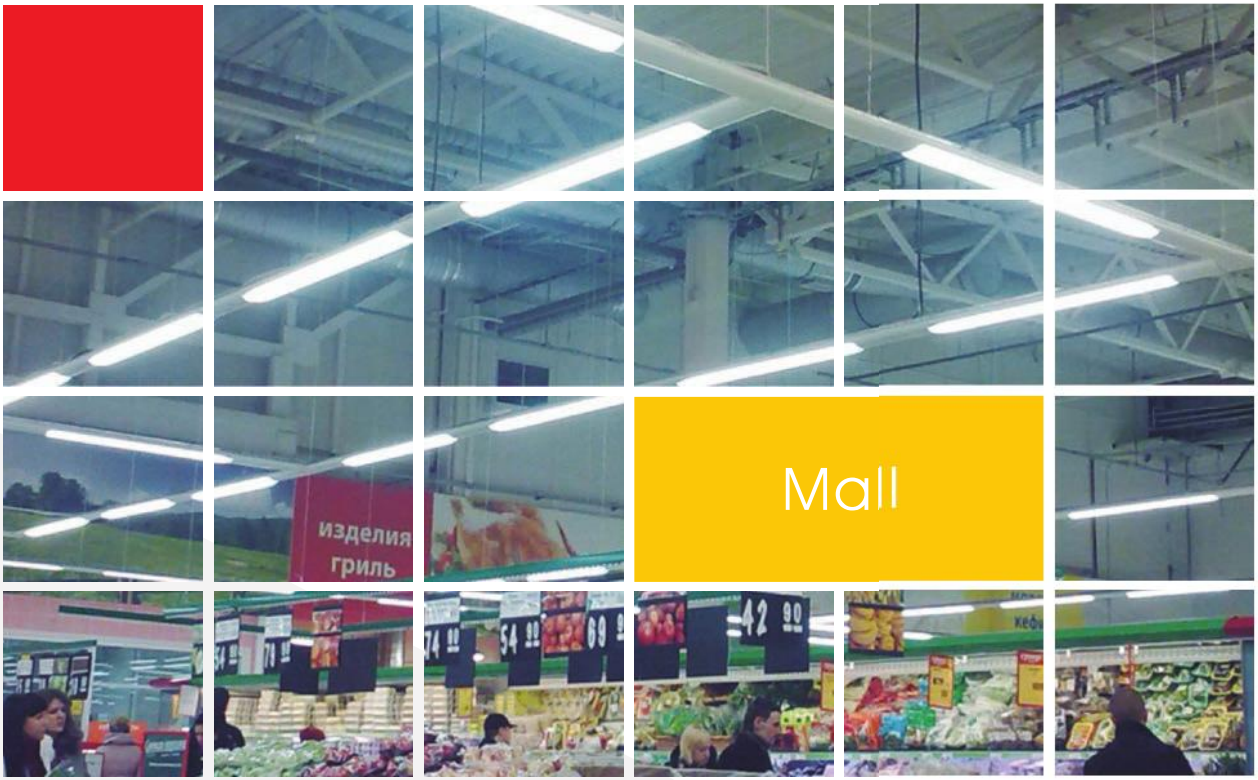
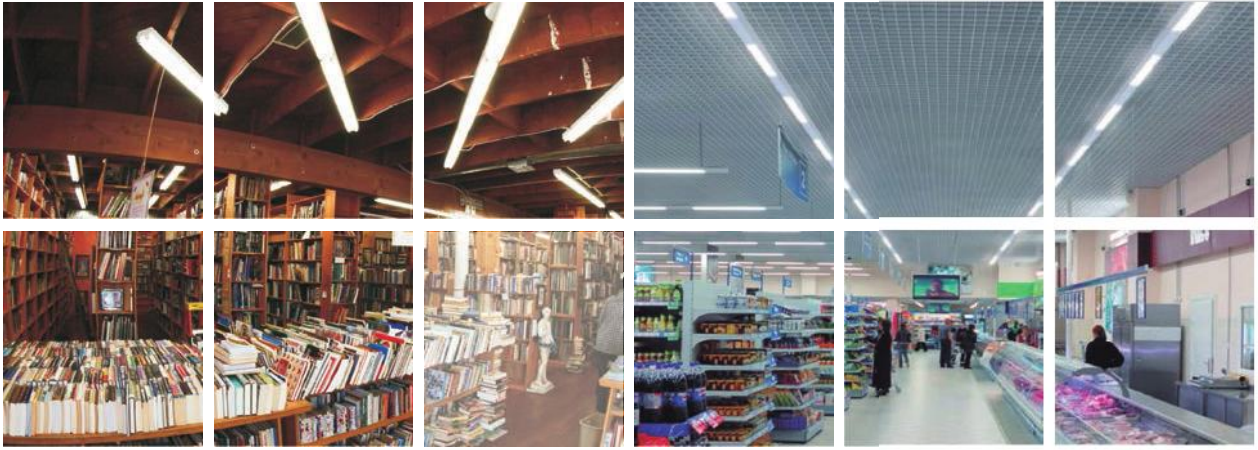


For lamp holder with electrical ballast



Data sheet

Model	Power	Input	CCT (K)	Initial Flux		Dimension
				Ra≥72	Ra≥80	
LMTL-10A-8W-3K	8W	100-240Vac	2800-3200K	600-700LM	550-650LM	L590mm×Φ26mm
LMTL-10A-8W-4K			4000-4500K	700-800LM	650-750LM	
LMTL-10A-8W-6K			5500-6500K	700-800LM	650-750LM	
LMTL-10A-10W-3K	10W	100-240Vac	2800-3200K	800-900LM	750-850LM	L590mm×Φ26mm
LMTL-10A-10W-4K			4000-4500K	900-1000LM	850-950LM	
LMTL-10A-10W-6K			5500-6500K	900-1000LM	850-950LM	
LMTL-20A-18W-3K	18W	100-240Vac	2800-3200K	1600-1700LM	1500-1600LM	L1198mm×Φ26mm
LMTL-20A-18W-4K			4000-4500K	1700-1800LM	1600-1700LM	
LMTL-20A-18W-6K			5500-6500K	1700-1800LM	1600-1700LM	
LMTL-20A-20W-3K	20W	100-240Vac	2800-3200K	1800-1900LM	1700-1800LM	L1198mm×Φ26mm
LMTL-20A-20W-4K			4000-4500K	1900-2000LM	1800-1900LM	
LMTL-20A-20W-6K			5500-6500K	1900-2000LM	1800-1900LM	
LMTL-25A-22W-3K	22W	100-240Vac	2800-3200K	1900-2000LM	1800-1900LM	L1498mm×Φ26mm
LMTL-25A-22W-4K			4000-4500K	2100-2200LM	2000-2100LM	
LMTL-25A-22W-6K			5500-6500K	2100-2200LM	2000-2100LM	
LMTL-25A-25W-3K	25W	100-240Vac	2800-3200K	2100-2200LM	2000-2100LM	L1498mm×Φ26mm
LMTL-25A-25W-4K			4000-4500K	2200-2300LM	2100-2200LM	
LMTL-25A-25W-6K			5500-6500K	2200-2300LM	2100-2200LM	



Quality control & Certificate





Lumedgo
Optimum Led Solutions

Address: De Meenthe 6, 8471 ZP Wolvega, The Netherlands
Tel: +31-6-10121812

Website: www.lumedgo.com
Contact: info@lumedgo.com